

# Occupational Requirements Survey

Search Occupational Re

Go

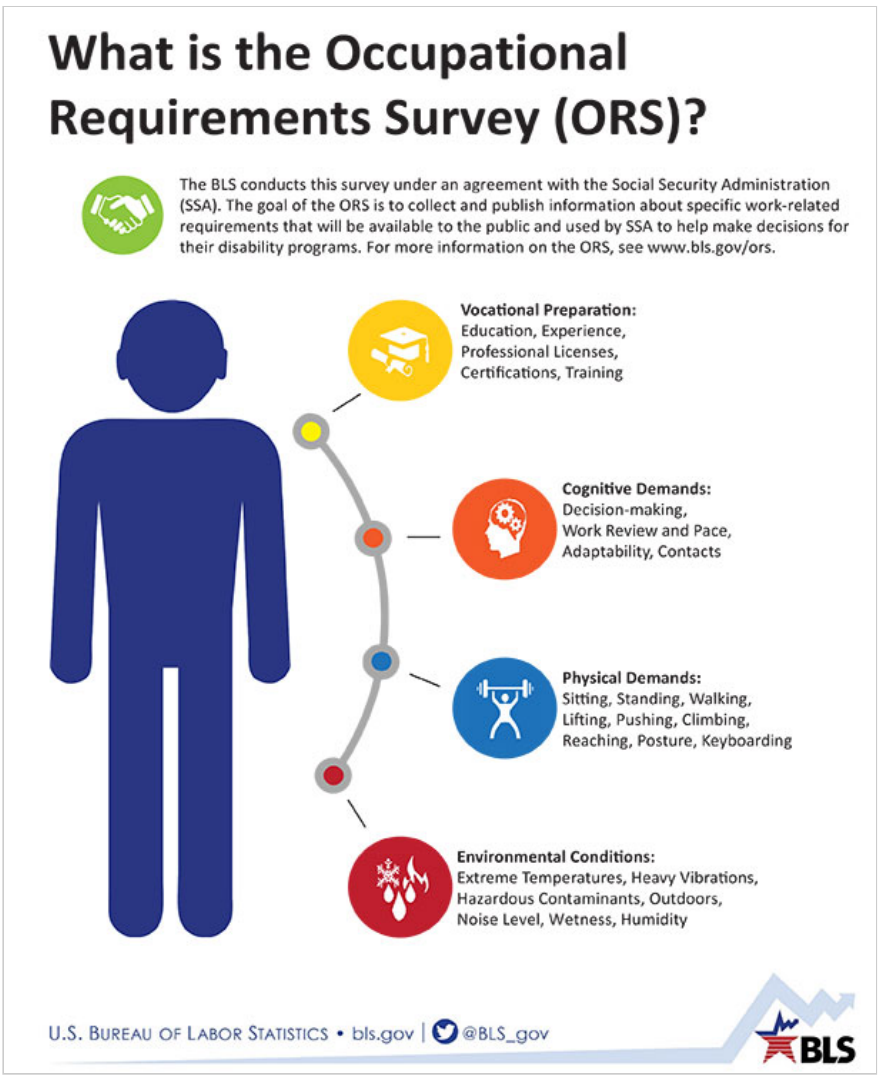
Bureau of Labor Statistics > Occupational Requirements Survey > Home

The **Occupational Requirements Survey (ORS)** is a product of the Bureau of Labor Statistics (BLS). The ORS provides job-related information regarding physical demands; environmental conditions; education, training, and experience; as well as cognitive and mental requirements for jobs in the U.S. economy.

## NOTICES

- Informing users of the next publication date. [Read More »](#)
- Link to notice on the BLS page of impact on COVID-19 on ORS. [Read More »](#)
- Seeking public comment on possible changes to North American Industry Classification System for 2022 [Read More »](#)

## GRAPHICS



Click the graphic to enlarge chart: *what is ors*.

1

2

[read more »](#)

## NEWS RELEASES

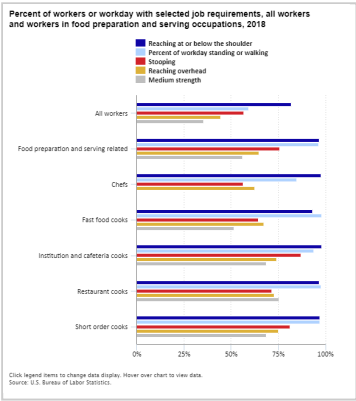
**On-the-job training required for 76.8% of US workers in 2018**  
*02/21/2019*

On-the-job training was required for 76.8 percent of U.S. workers in 2018. The average length of on-the-job training was about a month (34 days) and the median training time was about 14 days.

[HTML](#) | [PDF](#) | [RSS](#)

## PUBLICATIONS

### THE ECONOMICS DAILY



**Physical requirements in food preparation and serving jobs**

Reaching overhead was required for 44.5 percent of workers in all occupations in 2018. Among food preparation and serving occupations, however, reaching overhead was required for 65.0 percent of workers. Each of the five cook occupations requires most workers to reach overhead. Nearly all cook jobs also require workers to reach at or below the shoulder. [read more »](#)

1


2

## LATEST NUMBERS

- Physical demands of civilian workers


26.6%

Sedentary work strength level in 2018


- Environmental conditions of civilian workers


15.9%

Quiet noise intensity level in 2018


- Education, training, and experience of civilian workers

31.5%

No minimum education requirement in 2018


- [read more »](#)

RECOMMEND THIS PAGE USING:  Facebook  Twitter  LinkedIn

- Home
- Subjects
- Data Tools
- Publications
- Economic Releases
- Students
- Beta



U.S. BUREAU OF LABOR STATISTICS

Office of Compensation and Working  
Conditions  
PSB Suite 4160  
2 Massachusetts Avenue NE  
Washington, DC 20212-0001  
[Telephone:1-202-691-6199](tel:1-202-691-6199)  
[www.bls.gov/ORS](http://www.bls.gov/ORS)  
[Contact ORS](#)

INFO

- [What's New](#)
- [FAQs](#)
- [A-Z](#)
- [Glossary](#)
- [About BLS](#)
- [Careers @ BLS](#)
- [Find It! DOL](#)
- [Join our Mailing Lists](#)

RESOURCES

- [Inspector General \(OIG\)](#)
- [Budget and Performance](#)
- [No Fear Act](#)
- [USA.gov](#)

ABOUT THIS SITE

- [Sitemap](#)
- [Freedom of Information Act](#)
- [Privacy & Security Statement](#)
- [Disclaimers](#)
- [Linking & Copyright Info](#)
- [Important Website Notices](#)
- [Help & Tutorials](#)

Connect With BLS

