

# The feasibility of convalescent plasma therapy in severe COVID-19 patients: a pilot study

Kai Duan<sup>1,2\*</sup>, Bende Liu<sup>3\*</sup>, Cesheng Li<sup>4\*</sup>, Huajun Zhang<sup>5\*</sup>, Ting Yu<sup>6\*</sup>, Jieming Qu<sup>7\*</sup>, Min Zhou<sup>7\*</sup>, Li Chen<sup>8\*</sup>, Shengli Meng<sup>2</sup>, Yong Hu<sup>4</sup>, Cheng Peng<sup>5</sup>, Mingchao Yuan<sup>9</sup>, Jinyan Huang<sup>10</sup>, Zejun Wang<sup>2</sup>, Jianhong Yu<sup>4</sup>, Xiaoxiao Gao<sup>5</sup>, Dan Wang<sup>9</sup>, Xiaoqi Yu<sup>11</sup>, Li Li<sup>2</sup>, Jiayou Zhang<sup>2</sup>, Xiao Wu<sup>4</sup>, Bei Li<sup>5</sup>, Yanping Xu<sup>7</sup>, Wei Chen<sup>2</sup>, Yan Peng<sup>4</sup>, Yeqin Hu<sup>2</sup>, Lianzhen Lin<sup>4</sup>, Xuefei Liu<sup>7</sup>, Shihe Huang<sup>2</sup>, Zhijun Zhou<sup>4</sup>, Lianghao Zhang<sup>2</sup>, Yue Wang<sup>4</sup>, Zhi Zhang<sup>2</sup>, Kun Deng<sup>4</sup>, Zhiwu Xia<sup>2</sup>, Qin Gong<sup>4</sup>, Wei Zhang<sup>4</sup>, Xiaobei Zheng<sup>4</sup>, Ying Liu<sup>4</sup>, Huichuan Yang<sup>1</sup>, Dongbo Zhou<sup>1</sup>, Ding Yu<sup>1</sup>, Jifeng Hou<sup>12</sup>, Zhengli Shi<sup>5</sup>, Saijuan Chen<sup>10</sup>, Zhu Chen<sup>10+</sup>, Xinxin Zhang<sup>11+</sup>, Xiaoming Yang<sup>1,2+</sup>

1. China National Biotech Group Company Limited, 15F, Block 2, Fortune Tower, No.4 HuiXin East Street, Chaoyang District, Beijing 100029, China
2. National Engineering Technology Research Center for Combined Vaccines, Wuhan Institute of Biological Products Co.Ltd., No.1 Huangjin Industrial Park Road, Jiangxia District, Wuhan 430207, China
3. First People's Hospital of Jiangxia District, No.1 Wenhua Road, Jiangxia District, Wuhan 430200, China
4. Sinopharm Wuhan Plasma-derived Biotherapies Co.,Ltd, No.1A Huangjin Industrial Park Road, Jiangxia District, Wuhan 430207, China
5. CAS Key Laboratory of Special Pathogens, Wuhan Institute of Virology, Center for Biosafety Mega-Science, Chinese Academy of Sciences, 44 Xiao Hong Shan, Wuhan 430071, China
6. WuHanJinyintan Hospital, No.1 Jin Yin Tan Road, Dongxihu District, Wuhan 430023, China
7. Department of Respiratory and Critical Care Medicine, National Research Center for Translational Medicine (Shanghai,NRCTMS), Institute of Respiratory Diseases, Ruijin Hospital, Shanghai Jiao Tong University School of Medicine,No.197 Ruijin 2<sup>nd</sup> Road, Shanghai 200025, China
8. Clinical Research Center, Department of Gastroenterology, Ruijin Hospital North, Shanghai Jiao Tong University School of Medicine, Xiwang Road 999, Jiading District, Shanghai 200018, China
9. Wuhan Blood Center, No.8 BaoFeng First Road, Qiaokou District, Wuhan 430030, China
10. State Key Laboratory of Medical Genomics, Shanghai Institute of Hematology, NRCTMS, Ruijin Hospital, Shanghai Jiao Tong University School of Medicine,No.197 Ruijin 2<sup>nd</sup> Road, Shanghai 200025, China
11. Research Laboratory of Clinical Virology, Ruijin Hospital and Ruijin Hospital North, NRCTMS, Shanghai Jiao Tong University School of Medicine, No.197 Ruijin 2<sup>nd</sup> Road, Shanghai 200025, China

12. National Institute for Food and Drug Control of China, No.29 HuaTuo Road, Daxing District, Beijing 102629, China

\*Correspondence:

Xiaoming Yang

China National Biotech Group Company Limited, National Engineering Technology Research Center for Combined Vaccines, Wuhan 430207, China

**Email:** [yangxiaoming@sinopharm.com](mailto:yangxiaoming@sinopharm.com)

Xinxin Zhang

Research Laboratory of Clinical Virology, Ruijin Hospital and Ruijin Hospital North, National Research Center for Translational Medicine (Shanghai), Shanghai Jiao Tong University School of Medicine, No.197 Ruijin 2<sup>nd</sup> Road, Shanghai 200025, China

**Email:** [zhangx@shsmu.edu.cn](mailto:zhangx@shsmu.edu.cn)

Zhu Chen

State Key Laboratory of Medical Genomics, Shanghai Institute of Hematology, National Research Center for Translational Medicine (Shanghai), Ruijin Hospital, Shanghai Jiao Tong University School of Medicine, No.197 Ruijin 2<sup>nd</sup> Road, Shanghai 200025, China

**Email:** [zchen@stn.sh.cn](mailto:zchen@stn.sh.cn)

\* These authors contributed equally

## Classification

BIOLOGICAL SCIENCES; Medical Sciences

## Keywords

COVID-19, convalescent plasma, treatment outcome, pilot project

## Author Contributions

XZ, ZC, and XY contributed to the design of the study. SM, ZW, LL, JZ, WC, YH, SH, LZ, ZZ, ZX, JH, HY, DZ, and DY collected the epidemiological and clinical data. JH, XY, YX, XL, and JZ processed statistical data. KD, BL, CL, HZ, TY, JQ, MZ, ZC and LC drafted the manuscript. ZS, CP, XG, BL, YH, JY, XW, YP, LL, ZZ, YW, KD, QG, WZ, XZ, YL, MY, SC, and DW was responsible for virus detection and summarizing all epidemiological and clinical data. All authors reviewed and approved the final version.

## Abstract

Currently, there are no approved specific antiviral agents for 2019 novel coronavirus disease (COVID-19). In this study, ten severe patients confirmed by real-time viral RNA test were enrolled prospectively. One dose of 200 mL convalescent plasma (CP) derived from recently recovered donors with the neutralizing antibody titers above 1:640 was transfused to the patients as an addition to maximal supportive care and antiviral agents. The primary endpoint was the safety of CP transfusion. The second endpoints were the improvement of clinical symptoms and laboratory parameters within 3 days after CP transfusion. The median time from onset of illness to CP transfusion was 16.5 days. After CP transfusion, the level of neutralizing antibody increased rapidly up to 1:640 in five cases, while that of the other four cases maintained at a high level (1:640). The clinical symptoms were significantly improved along with increase of oxyhemoglobin saturation within 3 days. Several parameters tended to improve as compared to pre-transfusion, including increased lymphocyte counts ( $0.65 \times 10^9/L$  vs.  $0.76 \times 10^9/L$ ) and decreased C-reactive protein (55.98 mg/L vs. 18.13 mg/L). Radiological examinations showed varying degrees of absorption of lung lesions within 7 days. The viral load was undetectable after transfusion in seven patients who had previous viremia. No severe adverse effects were observed. This study showed CP therapy was welltolerated and could potentially improve the clinical outcomes through neutralizing viremia in severe COVID-19 cases. The optimal dose and time point, as well as the clinical benefit of CP therapy, needs further investigation in larger well-controlled trials.

## Significance Statement

COVID-19 is currently a big threat to global health. However, no specific antiviral agents are available for its treatment. In this work, we explored the feasibility of convalescent plasma (CP) transfusion to rescue severe patients. The results from 10 severe adult cases showed that one dose (200 mL) of CP was welltolerated and could significantly increase or maintain the neutralizing antibodies at a high level, leading to disappearance of viremia in 7 days. Meanwhile, clinical symptoms and paraclinical criteria rapidly improved within 3 days. Radiological examination

showed varying degrees of absorption of lung lesions within 7 days. These results indicate that CP can serve as a promising rescue option for severe COVID-19 while the randomized trial is warranted.

## **Main Text**

### **Introduction**

Since December 2019, a pneumonia associated with severe acute respiratory syndrome coronavirus 2 (SARS-CoV-2), named as 2019 novel coronavirus disease (COVID-19) by World Health Organization (WHO), emerged in Wuhan, China (1-3). The epidemic spread rapidly worldwide within three months and was characterized as a pandemic by WHO on March 11, 2020. As of March 12, 2020, a total of 80,980 confirmed cases and 3,173 deaths had been reported in China. Meanwhile, a total of 44,377 confirmed cases and 1,446 deaths was reported in other 108 countries or regions. Currently, there are no approved specific antiviral agents targeting the novel virus, while some drugs are still under investigation, including remdesivir and lopinavir/ritonavir (4, 5). Although remdesivir was reported to possess potential antiviral effect in one COVID-19 patient from the U.S., randomized controlled trials of this drug are ongoing to determine its safety and efficacy (6). Moreover, the corticosteroid treatment for COVID-19 lung injury remains controversial, due to delayed clearance of viral infection and complications (7,8). Since the effective vaccine and specific antiviral medicines are unavailable, it is an urgent need to look for an alternative strategy for COVID-19 treatment, especially among severe patients.

Convalescent plasma (CP) therapy, a classic adaptive immunotherapy, has been applied to the prevention and treatment of many infectious diseases for more than one century. Over the past two decades, CP therapy was successfully used in the treatment of SARS, MERS, and 2009 H1N1 pandemic with satisfactory efficacy and safety (9-12). A meta-analysis from 32 studies of SARS coronavirus infection and severe influenza showed a statistically significant reduction in the pooled odds of mortality following CP therapy, compared with placebo or no therapy (odds ratio, 0.25; 95% confidence interval, 0.14-0.45) (13). However, the CP therapy was unable to significantly improve the survival in the Ebola virus disease, probably due to the absence of data of neutralizing antibody titration for stratified analysis (14). Since the virological and clinical characteristics share similarity among SARS, MERS, and COVID-19 (15), CP therapy might be a promising treatment option for COVID-19 rescue (16). Patients who have recovered from COVID-19 with a high neutralizing antibody titer may be a valuable donor source of CP. Nevertheless, the potential clinical benefit and risk of convalescent blood products in COVID-19 remains uncertain. Hence, we performed this pilot study in three participated hospitals to explore the feasibility of CP treatment in 10 severe COVID-19 patients.

## Results

### Neutralizing activity of CP against SARS-CoV-2

The neutralizing activity against SARS-CoV-2 was evaluated by classical plaque reduction test using a recently isolated viral strain (1). Among the first batch of CP samples from 40 recovered COVID-19 patients, 39 showed high antibody titers of at least 1:160 whereas only one had a antibody titer of 1:32. This result laid the basis for our pilot clinical trial using CP in severe patients.

### General characteristics of Patients in the trial

From January 23, 2020, to February 19, 2020, ten severe COVID-19 patients (six males and four females) were enrolled and received CP transfusion. The median age was 52.5 years (IQR, 45.0–59.5 years) (Table 1). None of the patients had direct exposure to Huanan Seafood Wholesale Market. The median time from onset of symptoms to hospital admission and CP transfusion was 6 days (IQR, 2.5–8.5 days) and 16.5 days (IQR11.0–19.3 days), respectively. Three patients were affected by clustering infection. The most common symptoms at disease onset were fever (seven of ten patients), cough (eight cases), and shortness of breath (eight cases), while less common symptoms included sputum production (five cases), chest pain (two cases), diarrhea (two cases), nausea and vomiting (two cases), headache (one case), and sore throat (one case). Four patients had underlying chronic diseases, including cardiovascular and/or cerebrovascular diseases and essential hypertension. Nine patients received arbidolmonotherapy or combination therapy with remdesivir (in one case not included in the current clinical trial), or ribavirin, or peramivir, while one patient received ribavirin monotherapy (Table 2). Antibacterial or antifungal treatment was used when patients had co-infection. Six patients received intravenous methylprednisolone (20 mg every 24 hrs).

On computer-assisted tomography (CT), all patients presented bilateral ground-glass opacity and/or pulmonary parenchymal consolidation with predominantly subpleural and bronchovascular bundles distribution in the lungs. Seven patients had multiple lobe involvement and four patients had interlobular septal thickening.

### Effects of CP transfusion

**Improvement of clinical symptoms** All symptoms in the 10 patients, especially fever, cough, shortness of breath and chest pain, disappeared or largely improved within 1-3 days upon CP transfusion. Prior to CP treatment, three patients received mechanical ventilation, three received

high-flow nasal cannula oxygenation, and two received conventional low-flow nasal cannula oxygenation. After treatment with CP, two patients were weaned from mechanical ventilation to high-flow nasal cannula and one patient discontinued high flow nasal cannula. Besides, in one patient treated with conventional nasal cannula oxygenation, continuous oxygenation was shifted to intermittent one (Table 2).

**Reduction of pulmonary lesions on chest CT examinations** According to chest CTs, all patients showed different degrees of absorption of pulmonary lesions after CP transfusion. Representative chest CT images of patient 9 and patient 10 were shown on Fig. 1. Patient 9, a 49-year-old female admitted on 1 day post onset of illness (dpoi), showed the most obvious pulmonary image improvement. On 10 dpoi, one dose of 200 mL transfusion of CP was given. The SARS-CoV-2 RNA converted to negative on 12 dpoi. Compared with the result on 7 dpoi, massive infiltration and ground-glass attenuation disappeared on CT image performed on 13 dpoi, accompanied by a much better pulmonary function. Patient 10, a 50-year-old male, was admitted on 3 dpoi and was given a 200 mL transfusion of CP on 20 dpoi. His chest CT presented massive infiltration and widespread ground-glass attenuation on admission and started to show a gradual absorption of lung lesions 5 days after CP transfusion. The SARS-CoV-2 RNA became negative on 25 dpoi.

**Amelioration of routine laboratory criteria and pulmonary function** Lymphocytopenia, an important index for prognosis in COVID-19 (2), tended to be improved after CP transfusion (median:  $0.65 \times 10^9$  per L vs.  $0.76 \times 10^9$  per L), seven out of ten patients showing an increase of lymphocyte counts (Fig. 2). Concerning other laboratory tests, we observed a tendency of decrement of parameters indicative of inflammation and/or liver dysfunction as compared to the status before CP therapy. These included C-reactive protein (CRP) (median: 55.98 mg/L vs. 18.13 mg/L), alanine aminotransferase (median: 42.00 U/L vs. 34.30 U/L) and aspartate aminotransferase (median: 38.10 U/L vs. 30.30 U/L) (Table 3). The total bilirubin (median: 12.40  $\mu$ mol/L vs. 13.98  $\mu$ mol/L) remained unchanged except an obvious increment in patient 1 (Fig. 2). An increase of SaO<sub>2</sub> (median: 93.00% vs. 96.00%), a measurement constantly performed in most patients in our trial, was found, which could indicate recovering lung function. This temporal relationship was notable despite the provision of maximal supportive care and antiviral agents.

Remarkably, patient 1, a 46-year-old male admitted on 8 dpoi, had a very quick recovery with much improved result of laboratory tests. He received antiviral drugs (arbidol and ribavirin) treatment and high flow nasal cannula on admission. Mechanical ventilation was given on 10 dpoi for critical care support. CP transfusion was performed on 11 dpoi. On 12 dpoi, the SARS-CoV-2 test turned to negative, with a sharp decrease of CRP from 65.04 mg/L to 23.57 mg/L and increment of SaO<sub>2</sub> from 86% to 90% (Fig. 3). The mechanical ventilation was successfully weaned off 2 days after CP

transfusion. On 15 dpi, a steady elevation of lymphocyte count and a drop of aminophosphatase level were observed, indicating improvement of immunological and hepatic function.

**Increase of neutralizing antibody titers and disappearance of SARS-CoV-2 RNA** We determined neutralizing antibody titers before and after CP transfusion in all patients except one (patient 2) (Table 4). The neutralizing antibody titers of five patients increased and four patients remained at the same level after CP transfusion. SARS-CoV-2 RNA, assayed by reverse transcriptase-polymerase chain reaction (RT-PCR), was positive in seven patients and negative in three cases before CP transfusion. Of note, SARS-CoV-2 RNA was decreased to an undetectable level in 3 patients on day 2, 3 patients on day 3 and 1 patient on day 6 after CP therapy. These results were in support of an neutralizing effect of CP on serum SARS-CoV-2.

**Outcome of patients treated with CP as compared to a recent historic control group** A historic control group was formed by random selection of 10 patients from the cohort treated in the same hospitals and matched by age, gender and severity of the diseases to the 10 cases in our trial. Baseline characteristics of patients between CP treatment group and control group showed no significant differences, while clinical outcomes of these two groups were different: 3 cases discharged while 7 cases in much improved status and ready for discharge in CP group, as compared to 3 deaths, 6 cases in stabilized status and one case in improvement in the control group ( $p < 0.001$ , Supplementary table 1).

### **Adverse effects of CP transfusions**

Patient 2 showed an evanescent facial red spot. No serious adverse reactions or safety events were recorded after CP transfusion.

### **Discussion**

To our knowledge, this is the first study to explore the feasibility of CP therapy in COVID-19. All enrolled severe COVID-19 patients achieved primary and secondary outcomes. One dose of 200 mL CP transfusion was well tolerated, while the clinical symptoms significantly improved with the increase of oxyhemoglobin saturation within 3 days, accompanied by rapid neutralization of viremia. Severe pneumonia caused by human coronavirus was characterized by rapid viral replication, massive inflammatory cell infiltration, and elevated proinflammatory cytokines or even cytokine storm in alveoli of lungs, resulting in acute pulmonary injury and acute respiratory distress



syndrome (ARDS) (17). Recent studies on COVID-19 demonstrated that the lymphocyte counts in the peripheral blood were remarkably decreased and the levels of cytokines in the plasma from patients requiring ICU support, including IL-6, IL-10, TNF- $\alpha$ , GM-CSF, were significantly higher than those who did not require ICU conditions (2, 18). CP, obtained from recovered COVID-19 patients who had established humoral immunity against the virus, contains a large quantity of neutralizing antibodies capable of neutralizing SARS-CoV-2 and eradicating the pathogen from blood circulation and pulmonary tissues (19). In the present study, all investigated patients achieved serum SARS-CoV-2 RNA negativity after CP transfusion, accompanied by the increase of oxygen saturation and lymphocyte counts, and the improvement of liver function and C-reactive protein. The results suggested that the inflammation and overreaction of the immune system were alleviated by antibodies contained in CP. The case-fatality rates (CFRs) in the present study were 0% (0/10), which was comparable to the CFRs in SARS which varied from 0% (0/10) to 12.5% (10/80) in four non-comparative studies using CP treatment (9, 20-22). Based on our preliminary results, CP therapy can be an easy-accessible, promising and safe rescue option for severe COVID-19 patients. It is nevertheless worth mentioning that the absorption of pulmonary lesions was often behind the improvement of clinical symptoms, as shown in patients 9 and 10 in this trial. The first key factor associated with CP therapy is the neutralizing antibody titer. A small sample study in MERS-CoV infection showed that the neutralizing antibody titer should exceed 1:80 to achieve effective CP therapy (12). To find eligible donors who have high levels of neutralizing antibody is a prerequisite. Cao (23) et al showed that the level of specific neutralizing antibody to SARS-CoV decreased gradually 4 months after the disease process, reaching undetectable levels in 25.6% (IgG) and 16.1% (neutralizing antibodies) of patients at 36 months after disease status. A study from the MERS-CoV infected patients and the exposed healthcare workers showed that the prevalence of MERS-CoV IgG seroreactivity was very low (2.7%), and the antibodies titer decreased rapidly within 3 months (24). These studies suggested that the neutralizing antibodies represented short-lasting humoral immune response and plasma from recently recovered patients should be more effective. In the present study, recently recovered COVID-19 patients, who were infected by SARS-CoV-2 with neutralizing antibody titer above 1:640 and recruited from local hospitals should be considered as suitable donors. The median age of donors was lower than that of recipients (42.0 vs. 52.5 years). Among the nine cases investigated, the neutralizing antibody titers of five patients increased while four patients kept the same level to 1:640 within two days. The antibody titers in CP in COVID-19 seem thus higher than those used in the treatment of MERS patient (1:80) (12). The second key factor associated with efficacy is the treatment time point. A better treatment outcome was observed among SARS patients who were given CP before 14 dpi (58.3% vs 15.6%;  $P < 0.01$ ), highlighting the importance of timely rescue therapy (9). The mean time from onset of illness to CP transfusion was 16.5 days. Consistent with previous research, all three patients



receiving plasma transfusion given before 14 dpi (patients 1, 2 and 9) in our study showed a rapid increase of lymphocyte counts and a decrease of CRP, with remarkable absorption of lung lesions in CT. Notably, patients who received CP transfusion after 14 dpi showed much less significant improvement, such as patient 10. However, the dynamics of the viremia of SARS-CoV-2 was unclear, so the optimal transfusion time point needs to be determined in the future.

In the present study, no severe adverse effects were observed. One of the risks of plasma transfusion is the transmission of the potential pathogen. Methylene blue photochemistry was applied in this study to inactivate the potential residual virus and to maintain the activity of neutralizing antibodies as much as possible, a method known to be much better than ultraviolet C light (25). No specific virus was detected before transfusion. Transfusion-related acute lung injury (TRALI) was reported in an Ebola virus disease woman who received CP therapy (26). Although uncommon in the general population receiving plasma transfusion, this specific adverse reaction is worth noting, especially among critically ill patients experiencing significant pulmonary injury (27). Another rare risk worth mentioning during CP therapy is antibody-dependent infection enhancement, occurring at sub-neutralizing concentrations, which could suppress innate antiviral systems and thus could allow logarithmic intracellular growth of the virus (28). The special immune enhancement was reportedly more common in Dengue fever, but also could be found in SARS-CoV infection *in vitro* (29). No such pulmonary injury and infection enhancement were observed in our patients, probably owing to high levels of neutralizing antibodies, timely transfusion, and appropriate plasma volume.

There were some limitations to the present study. First, except for CP transfusion, the patients received other standard cares. All patients received antiviral treatment despite the uncertainty of the efficacy of drugs used. As a result, the possibility that these antiviral agents could contribute to the recovery of patients, or synergize with the therapeutic effect of CP, could not be ruled out. Furthermore, some patients received glucocorticoid therapy, which might interfere with immune response and delay virus clearance. Second, the median time from onset of symptoms to CP transfusion was 16.5 days (IQR 11.0-19.3 days). Although the kinetics of viremia during natural history remains unclear, the relationship between SARS-CoV-2 RNA reduction and CP therapy, as well as the optimal concentration of neutralizing antibodies and treatment schedule, should be further clarified. Third, the dynamic changes of cytokines during treatment were not investigated. Nevertheless, the preliminary results of this trial seem promising, justifying a randomized controlled clinical trial in a larger patient cohort.

In conclusion, this pilot study on CP therapy showed a potential therapeutic effect and low risk in the treatment of severe COVID-19 patients. One dose of CP with high concentration of neutralizing

antibodies can rapidly reduce the viral load and tends to improve clinical outcomes. The optimal dose and treatment time point, as well as the definite clinical benefits of CP therapy, need to be further investigated in randomized clinical studies.

## **Materials and Methods**

### **Patients**

From January 23, 2020, to February 19, 2020, ten patients in three participating hospitals (Wuhan Jinyintan Hospital, the Jiangxia District Hospital of Integrative Traditional Chinese and Western Medicine, Wuhan, and the First People's Hospital of Jiangxia District, Wuhan) were recruited in this pilot study. All patients were diagnosed as having severe COVID-19 according to the WHO Interim Guidance (30) and the Guideline of Diagnosis and Treatment of COVID-19 of National Health Commission of China (version 5.0) (31), with confirmation by real-time RT-PCR assay. The enrollment criteria were one of the conditions (2 to 4) plus condition (1): 1). Age  $\geq 18$  years; 2). Respiratory distress, RR  $\geq 30$  beats/min; 3). Oxygen saturation level less than 93% in resting state; 4). Partial pressure of oxygen (PaO<sub>2</sub>)/oxygen concentration (FiO<sub>2</sub>)  $\leq 300$  mmHg (1 mmHg=0.133 kPa). The exclusion criteria were as follows: 1). Previous allergic history to plasma or ingredients (Sodium Citrate); 2). Cases with serious general conditions, such as severe organ dysfunction, who were not suitable for CP transfusion; Written informed consent according to the Declaration of Helsinki was obtained from each patient or legal relatives. This study was approved by the Ethics Committee of the China National Biotec Group Co., Ltd. (Approval number:2020-0001). The registration number of this trial was ChiCTR2000030048.

### **Donors for convalescent plasma transfusion**

Tendonor patients who recovered from COVID-19 were recruited from three participating hospitals. The recovery criteria were as follows: 1). Normality of body temperature for more than 3 days; 2). Resolution of respiratory tract symptoms; 3). Two consecutively negative results of sputum SARS-CoV-2 of real-time reverse transcriptase-polymerase chain reaction (RT-PCR) assay (one-day sampling interval). The donor's blood was collected after three weeks post-onset of illness and 4 days post-discharge. Written informed consent was obtained from each patient.

### **Plasma preparation procedure and quality control**

Apheresis was performed using a Baxter CS 300 cell separator (Baxter, Deerfield, IL, USA). Convalescence plasma for treatment was collected from 40 donors. The median age was 42.0 years (IQR, 32.5–49 years). A 400–600 mL ABO-compatible plasma sample was harvested from each

donor depending on the age and body weight, and each sample was divided and stored as 200 mL aliquots at 4°C without any detergent or heat treatment. The CP was then treated with methylene blue and light treatment for 30 minutes in the medical plasma virus inactivation cabinet (Shandong Zhongbaokang Medical Appliance Co., Ltd).

### **Serology test and real-time RT-PCR detection of SARS-CoV-2 and other pathogens**

The neutralized activity of plasma was determined by plaque reduction neutralization test using SARS-CoV-2 virus in the high biosafety level (BSL-4) laboratory of Wuhan Institute of Virology, Chinese Academy of Sciences. Neutralization titer was defined as the highest serum dilution with 50 % reduction in the number of plaques, as compared with the number of plaques in wells in the absence of novel coronavirus antibody as blank control. The neutralization activity of the receptor-binding domain (RBD) of antibody in the CP was detected by a sandwich ELISA. SARS-CoV-2-IgG antibody titer was tested by enzyme-linked immunosorbent assay. SARS-CoV-2 RNA was detected by RT-PCR assay and the result was presented as cycle threshold (Ct) value (Shanghai BioGerm Medical Biotechnology Co., Ltd). Methylene blue residue was detected by the verified ultraviolet method. The serology screening for hepatitis B and C virus, human immunodeficiency virus, and syphilis spirochete was negative. The protocols for SARS-CoV-2 serology and RNA test are presented in the supplementary materials.

### **Treatment**

All patients were admitted to the intensive care unit (ICU) and received antiviral therapy and other supportive care, while some patients received antibiotic treatment, antifungal treatment, glucocorticoid and oxygen support at the appropriate situation. One dose of 200 mL inactivated CP with neutralization activity >1:640 was transfused into the patients within 4 hours following the WHO blood transfusion protocol.

### **Data collection**

Clinical information of all enrolled patients was retrieved from the hospital electronic history system, including the baseline demographic data, days of illness duration, presenting symptoms, different kinds of examination and methods of treatment. Bacterial co-infection was identified by a positive culture from respiratory, urinary or blood culture within 48h of hospital admission. Complications including acute renal failure, acute coronary syndrome, myocarditis, acute respiratory distress syndrome, and nosocomial infection were recorded. The applications of assisted mechanical ventilation, intranasal oxygen inhalation, and medication regimen were recorded. The SARS-CoV-2 RNA from the serum sample was monitored during treatment.

## **Outcome Measures and Definitions**

The clinical symptoms were recorded by attending physicians daily. The blood test and biochemical tests were carried out every 1-2 days. SARS-CoV-2 RNA was detected every 2-3 days. CT scan was repeated every 3-5 days. The primary endpoint was the safety of CP transfusion. The second endpoints were the improvement of clinical symptoms, laboratory and radiological parameters within 3 days after CP transfusion. The clinical symptoms improvement was defined as temperature normalization, relief of dyspnea, and oxygen saturation normalization, and the radiological improvement was defined as different degrees of absorption of lung lesions.

## **Statistical analysis**

Continuous variables were presented as the median and interquartile range (IQR). Graphs were plotted using GraphPad Prism 7.0. Statistical software used included SPSS 24.0.

## **Data Availability statement**

The data that support the findings of this study are available from the corresponding author on reasonable request. Participant data without names and identifiers will be made available after approval from the corresponding author. After publication of study findings, the data will be available for others to request. The research team will provide an email address for communication once the data are approved to be shared with others. The proposal with detailed description of study objectives and statistical analysis plan will be needed for evaluation of the reasonability to request for our data. The corresponding author will make decision based on these materials. Additional materials may also be required during the process.

## **Acknowledgments**

This study was funded by Key projects of the Ministry of Science and Technology China "Preparation of specific plasma and specific globulin from patients with a recovery period of COVID-19 infection" (project number: 2020YFC0841800). This work was also supported by Shanghai Guangci Translational Medicine Development Foundation. We thank all patients and donors involved in this study.

## **References**

1. P. Zhou *et al.* A pneumonia outbreak associated with a new coronavirus of probable bat

- origin. *Nature*. (2020)
2. N. Chen *et al.*, Epidemiological and clinical characteristics of 99 cases of 2019 novel coronavirus pneumonia in Wuhan, China: a descriptive study. *Lancet***395**, 507-513 (2020).
3. WHO. Coronavirus disease 2019. Available at <https://www.who.int/emergencies/diseases/novel-coronavirus-2019>. Deposited 20 Feb 2020.
4. H. Lu, Drug treatment options for the 2019-new coronavirus (2019-nCoV). *Biosci Trends* 10.5582/bst.2020.01020 (2020).
5. M. Wang *et al.*, Remdesivir and chloroquine effectively inhibit the recently emerged novel coronavirus (2019-nCoV) in vitro. *Cell Res* 10.1038/s41422-020-0282-0 (2020).
6. M. L. Holshue *et al.*, First Case of 2019 Novel Coronavirus in the United States. *N Engl J Med* 10.1056/NEJMoa2001191 (2020).
7. C. D. Russell, J. E. Millar, J. K. Baillie, Clinical evidence does not support corticosteroid treatment for 2019-nCoV lung injury. *Lancet***395**, 473-475 (2020).
8. L. Shang, J. Zhao, Y. Hu, R. Du, B. Cao, On the use of corticosteroids for 2019-nCoV pneumonia. *Lancet***395**, 683-684 (2020).
9. Y. Cheng *et al.*, Use of convalescent plasma therapy in SARS patients in Hong Kong. *Eur J Clin Microbiol Infect Dis***24**, 44-46 (2005).
10. B. Zhou, N. Zhong, Y. Guan, Treatment with convalescent plasma for influenza A (H5N1) infection. *N Engl J Med***357**, 1450-1451 (2007).
11. I. F. Hung *et al.*, Convalescent plasma treatment reduced mortality in patients with severe pandemic influenza A (H1N1) 2009 virus infection. *Clin Infect Dis***52**, 447-456 (2011).
12. J. H. Ko *et al.*, Challenges of convalescent plasma infusion therapy in Middle East respiratory coronavirus infection: a single center experience. *Antivir Ther***23**, 617-622 (2018).
13. J. Mair-Jenkins *et al.*, The effectiveness of convalescent plasma and hyperimmune immunoglobulin for the treatment of severe acute respiratory infections of viral etiology: a systematic review and exploratory meta-analysis. *J Infect Dis***211**, 80-90 (2015).
14. J. van Griensven *et al.*, Evaluation of Convalescent Plasma for Ebola Virus Disease in Guinea. *N Engl J Med***374**, 33-42 (2016).
15. P. I. Lee, P. R. Hsueh, Emerging threats from zoonotic coronaviruses-from SARS and MERS to 2019-nCoV. *J Microbiol Immunol Infect* 10.1016/j.jmii.2020.02.001 (2020).
16. L. Chen, J. Xiong, L. Bao, Y. Shi, Convalescent plasma as a potential therapy for COVID-19. *Lancet Infect Dis* 10.1016/S1473-3099(20)30141-9 (2020).
17. R. Channappanavar, S. Perlman, Pathogenic human coronavirus infections: causes and consequences of cytokine storm and immunopathology. *Semin Immunopathol***39**, 529-539

- (2017).
18. C. Huang *et al.*, Clinical features of patients infected with 2019 novel coronavirus in Wuhan, China. *Lancet***395**, 497-506 (2020).
19. G. Marano *et al.*, Convalescent plasma: new evidence for an old therapeutic tool? *Blood Transfus***14**, 152-157 (2016).
20. V. W. Wong, D. Dai, A. K. Wu, J. J. Sung, Treatment of severe acute respiratory syndrome with convalescent plasma. *Hong Kong Med J***9**, 199-201 (2003).
21. K. M. Yeh *et al.*, Experience of using convalescent plasma for severe acute respiratory syndrome among healthcare workers in a Taiwan hospital. *J Antimicrob Chemother***56**, 919-922 (2005).
22. L. K. Kong, B. P. Zhou, Successful treatment of avian influenza with convalescent plasma. *Hong Kong Med J***12**, 489 (2006).
23. W. C. Cao, W. Liu, P. H. Zhang, F. Zhang, J. H. Richardus, Disappearance of antibodies to SARS-associated coronavirus after recovery. *N Engl J Med***357**, 1162-1163 (2007).
24. Y. M. Arabi *et al.*, Feasibility of Using Convalescent Plasma Immunotherapy for MERS-CoV Infection, Saudi Arabia. *Emerg Infect Dis***22**, 1554-1561 (2016).
25. M. Eickmann *et al.*, Inactivation of Ebola virus and Middle East respiratory syndrome coronavirus in platelet concentrates and plasma by ultraviolet C light and methylene blue plus visible light, respectively. *Transfusion***58**, 2202-2207 (2018).
26. M. Mora-Rillo *et al.*, Acute respiratory distress syndrome after convalescent plasma use: treatment of a patient with Ebola virus disease contracted in Madrid, Spain. *Lancet Respir Med***3**, 554-562 (2015).
27. A. B. Benson, M. Moss, C. C. Silliman, Transfusion-related acute lung injury (TRALI): a clinical review with emphasis on the critically ill. *Br J Haematol***147**, 431-443 (2009).
28. S. B. Halstead, Dengue Antibody-Dependent Enhancement: Knowns and Unknowns. *Microbiol Spectr***2** (2014).
29. S. F. Wang *et al.*, Antibody-dependent SARS coronavirus infection is mediated by antibodies against spike proteins. *Biochem Biophys Res Commun***451**, 208-214 (2014).
30. WHO. Clinical management of severe acute respiratory infection when Novel coronavirus (nCoV) infection is suspected: interim guidance. Available at [https://www.who.int/publications-detail/clinical-management-of-severe-acute-respiratory-infection-when-novel-coronavirus-\(ncov\)-infection-is-suspected](https://www.who.int/publications-detail/clinical-management-of-severe-acute-respiratory-infection-when-novel-coronavirus-(ncov)-infection-is-suspected). Deposited 20 Feb 2020.
31. National Health Commission of China. Guideline for diagnosis and treatment for novel coronavirus pneumonia (fifth edition). Deposited 4 Feb 2020.

## Figures and Tables

### Figure 1. Chest CTs of two patients

(A) Chest CT of patient 9 obtained on Feb 9 (7 dpi) before convalescent plasma transfusion (10 dpi) showed ground glass opacity with uneven density involving the multilobar segments of both lungs. The heart shadow outline was not clear. The lesion was close to the pleura. (B) CT Image of patient 9 taken on Feb 15 (13 dpi) showed the absorption of bilateral ground glass opacity after convalescent plasma transfusion. (C) Chest CT of patient 10 was obtained on Feb 8 (19 dpi) before convalescent plasma transfusion (20 dpi). The brightness of both lungs was diffusely decreased and multiple shadows of high density in both lungs were observed. (D) Chest CT of patient 10 on Feb 18 (29 dpi) showed those lesions improved after convalescent plasma transfusion.

### Figure 2. Dynamic changes of laboratory parameters in all patients.

The dotted horizontal line represents the reference value range. CP=convalescent plasma. CRP=C-reactive protein. SaO<sub>2</sub>=oxyhemoglobin saturation. TBIL=total bilirubin. ALT=alanine aminotransferase. AST=aspartate aminotransferase.

### Figure 3. Change of laboratory parameters in patient 1

X-axis represents the day post convalescent plasma transfusion. The dotted horizontal line represents the reference value range. CP=convalescent plasma. CRP=C-reactive protein. SaO<sub>2</sub>=oxyhemoglobin saturation. TBIL=total bilirubin. ALT=alanine aminotransferase. AST=aspartate aminotransferase.



**Table 1.** Clinical characteristics of patients receiving convalescent plasma transfusion.

No.	Sex	Age	Clinical classification	Days of admission from symptom onset	Days of convalescent plasma therapy from symptom onset	Clustering infection	Principal symptoms	Comorbidity
1	M	46	Severe	8	11	No	Fever, cough, sputum production, shortness of breath, chest pain	Hypertension
2	F	34	Severe	0	11	Yes	Cough, shortness of breath, chest pain, nausea and vomiting	None
3	M	42	Severe	8	19	Yes	Fever, cough, sputum production, shortness of breath, sore throat, diarrhea	Hypertension
4	F	55	Severe	10	19	No	Fever, cough, sputum production, shortness of breath	None
5	M	57	Severe	4	14	No	Fever, shortness of breath	None
6	F	78	Severe	8	17	Yes	Fever, cough, sputum production, shortness of breath, muscle ache	None
7	M	56	Severe	4	16	No	Fever, cough, sputum production, arthralgia	None
8	M	67	Severe	10	20	No	Fever, cough, headache, diarrhea, vomiting	Cardiovascular and cerebrovascular diseases
9	F	49	Severe	1	10	No	Cough, shortness of breath	None
10	M	50	Severe	3	20	No	Shortness of breath	Hypertension

M=male. F=female.

**Table 2.** Other treatments of ten patients receiving convalescent plasma transfusion.

No.	Drugs administered			Oxygen support	
	Antiviral treatment	Antibiotic or antifungal treatment	Corticosteroids treatment	Before convalescent plasma therapy	After convalescent plasma therapy
1	Arbidol 0.2g q8h po. Ribavirin 0.5g qdi.v.	Cefoperazone Sodium i.v.	None	High-flow nasal cannula, mechanical ventilation	Mechanical ventilation
2	Arbidol 0.2g q8hpo.	Cefoperazone Sodium i.v.	None	None	None
3	Arbidol 0.2g q8hpo.	Moxifloxacin i.v.	Methylprednisolone i.v.	High-flow nasal cannula, mechanical ventilation	High-flow nasal cannula
4	Ribavirin 0.5g qdi.v.	Linezolid i.v. Imipenem - Sitastatin Sodium i.v.	Methylprednisolone i.v.	Mechanical ventilation	High-flow nasal cannula
5	Arbidol 0.2g q8hpo. Remdesivir 0.2g qdi.v. Interferon- $\alpha$ 500MIU qdinh.	Moxifloxacin i.v. Cefoperagone Sodium and Tazobactam Sodium i.v.	Methylprednisolone i.v.	Low-flow nasal cannula	Low-flow nasal cannula
6	Arbidol 0.2g q8h po.	Cefoperazone Sodium i.v. Levofloxacin i.v.	Methylprednisolone i.v.	High-flow nasal cannula	High-flow nasal cannula
7	Arbidol 0.2g q8h po.	Cefoperagone Sodium and Tazobactam Sodium i.v. Fluconazole i.v.	Methylprednisolone i.v.	High-flow nasal cannula	none
8	Arbidol 0.2g q8h po. Ribavirin 0.5g qdi.v.	None	None	None	None
9	Arbidol 0.2g q8h po. Oseltamivir 75mg q12h po. Peramivir 0.3g qdi.v.	None	None	Low-flow nasal cannula	Low-flow nasal cannula (Intermittent)
10	Arbidol 0.2g q8h po. Interferon- $\alpha$ 500MIU qdinh.	Cefoperazone Sodium i.v. Caspofungin i.v.	Methylprednisolone i.v.	High-flow nasal cannula	High-flow nasal cannula

po.=peros. i.v.=intravenous injection. inh.=inhalation.

**Table 3.** Comparison of laboratory parameters before and after convalescent plasma transfusion

Clinical Factors	Before CP transfusion	After CP transfusion
C-reactive protein (mg/L, normal range 0-6)	55.98 (15.57-66.67)	18.13 (10.92-71.44)
Lymphocyte ( $10^9$ per L, normal range 1.1-3.2)	0.65 (0.53-0.90)	0.76 (0.52-1.43)
Alanine aminotransferase (U/L, normal range 9-50)	42.00 (28.25-61.85)	34.30 (25.75-53.90)
Aspartate aminotransferase (U/L, normal range 15-40)	38.10 (28.50-44.00)	30.30 (17.30-38.10)
Total bilirubin ( $\mu$ mol/L, normal range 0-26)	12.40 (11.71-22.05)	13.98 (12.20-20.80)
SaO <sub>2</sub> (% , normal range $\geq 95$ )	93.00 (89.00-96.50)	96.00 (95.00-96.50)

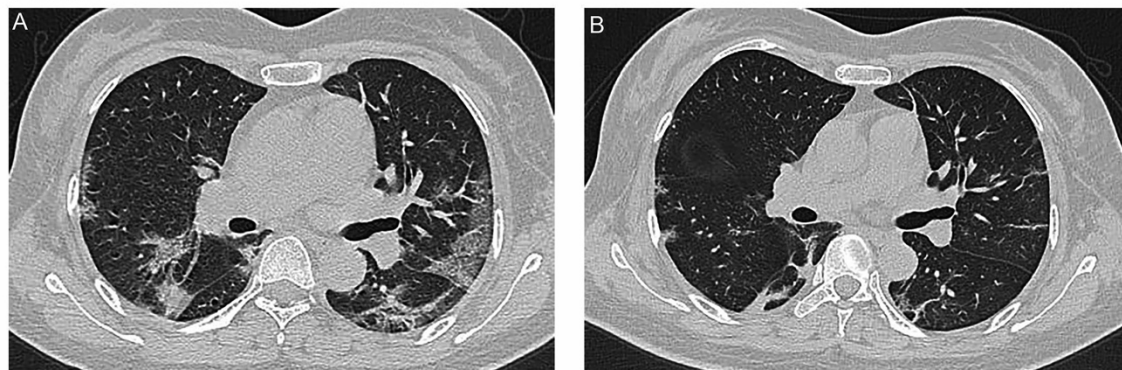
SaO<sub>2</sub>=oxyhemoglobin saturation.

**Table 4.** Comparison of serum neutralizing antibody titers and SARS-CoV-2 RNA load before and after convalescent plasma therapy

patient No.	CP transfusion Date	Before CP transfusion			After CP transfusion		
		Date	Serum neutralizing antibody titres	Serum SARS-CoV-2 RNA load (Ct value)	Date	Serum neutralizing antibody titres	Serum SARS-CoV-2 RNA load (Ct value)
1	February 9	February 8	1:160	37.25	February 10	1:640	negative
2	February 9	February 8	Unavailable	35.08	February 11	Unavailable	negative
3	February 13	February 12	1:320	38.07	February 14	1:640	negative
4	February 13	February 12	1:160	37.68	February 14	1:640	negative
5	February 12	February 11	1:640	negative	February 14	1:640	negative
6	February 12	February 11	1:640	negative	February 14	1:640	negative
7	February 12	February 11	1:320	34.64	February 14	1:640	negative
8	February 12	February 11	1:640	35.45	February 14	1:640	negative
9	February 12	February 11	1:160	negative	February 14	1:640	negative
10	February 9	February 8	1:640	38.19	February 14	1:640	negative

Figure 1:

Patient 9



Patient 10

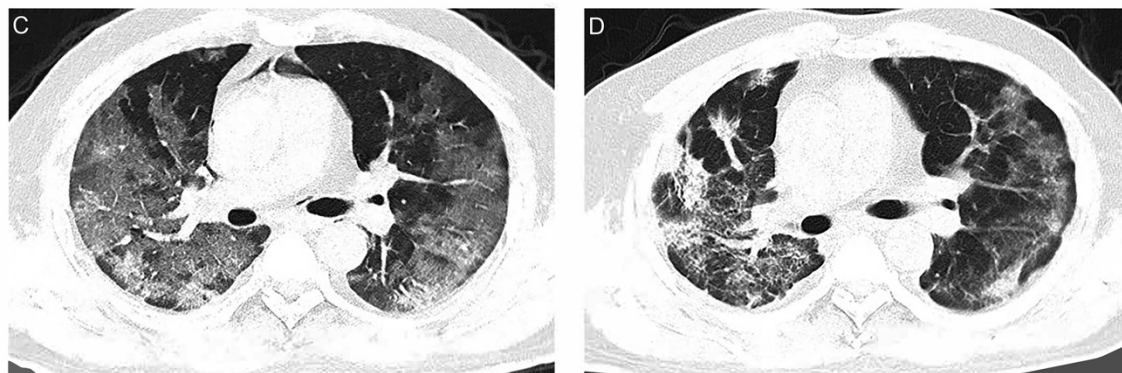


Figure 2:

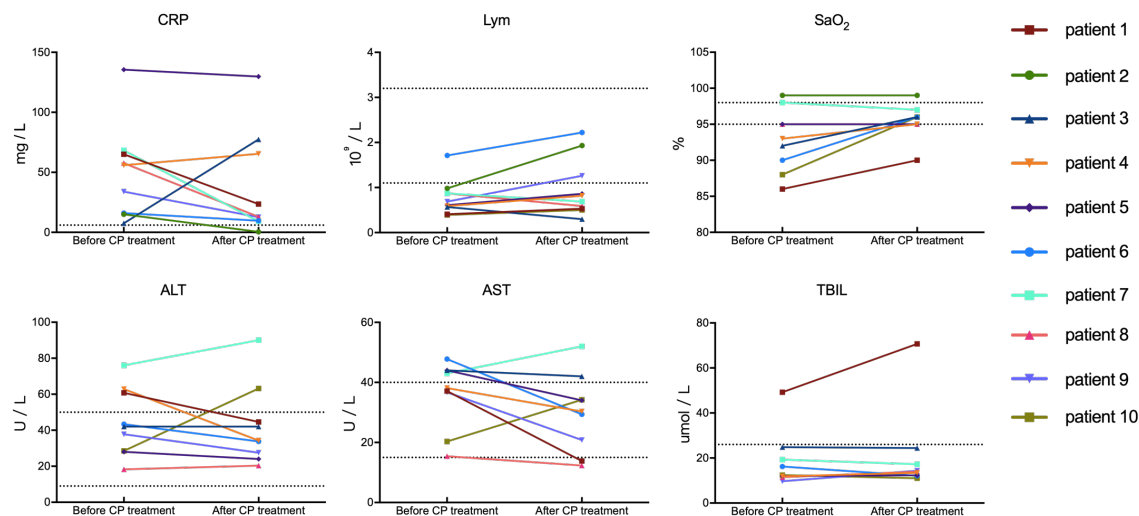


Figure 3:

